

PREMIUM GRADE

# SAFLAMI

Cold & Hot 5 feet Lamination



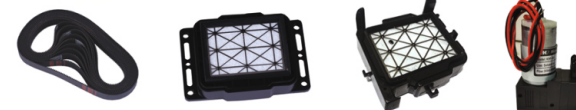
Model Name / Number : SL 1600L.  
Paper Size : 61 inch.  
Machine Type : Automatic.  
Laminating Film : Vinyl.

# SAFJET

WE ARE SELLING INKS AND SPARES



XP600 PRINT HEAD    KM512i - PRINT HEAD    DX7 - PRINT HEAD    DX4-PRINT HEAD



DX5-CAPTOP



DAMPERS 2



# SAFJET

XP 600 - ECO SOLVENT  
SINGLE HEAD PRINTER

XP 600  
SINGLE  
HEAD  
PRINTER



### SPECIFICATION

MODEL No.	PRINT HEAD	PRINTING SPEED	COLOR	PRINTING WIDTH
XP 600 SINGLE HEAD	1PC EPSON XP 600	140 sqft	CMYK	1.9 METER

PRINTER SIZE : 6 FEET



# SAFJET

## XP 600 - ECO SOLVENT DUAL HEAD PRINTER



**XP 600  
DUAL  
HEAD  
PRINTER**

### SPECIFICATION

MODEL No.	PRINT HEAD	PRINTING SPEED	COLOR	PRINTING WIDTH
XP 600 DUAL HEAD	2 PC EPSON XP 600	240 sqft	CMYK	1.9 METER
RIP SOFTWARE		HEATING SYSTEM		
MAINTOP 6.0 / PHOTOPRINT (OPTION)		FRONT AND BACK-SIDE HEATING SYSTEM		

**PRINTER SIZE : 6 FEET**

# SAFJET

## SOLVENT PRINTING MACHINE



**KM 512  
PI - 42**  
Speed - 400 Sqft

**KM 512 i**  
Speed - 1400 Sqft

### SPECIFICATION

MODEL NO.	PRINT HEAD	PRINT MODE	PRINT SPEED	PRINT WIDTH
KM 512 PI - 42 KM 512 i	4/8 Head Konic 512i/30pl	480 x 360 dpi 2 Pass	1400 / 2800 Sq Ft/hr	3200 MM
PRINT INTERFACE	MEDIA TRANSMISSION	RIP SOFTWARE	INK TYPE	Power Requirements
USB	Roll to Roll	Ultra Print photo Print Maintop	CMYK	220v

**MEDIA TYPE : Flax / Vinyl / Star / BackLit / One Way Vision / Transparent**



# SAFJET

## ECO SOLVENT/SUBLIMATION PRINTER



### SPECIFICATION

PRINT HEAD	COLOR	NOS OF PRINthead		PRINTING RESOLUTION	
EPSON Xp600	4	2		MAX 1440X1440dpi	
PRINT WIDTH 1.6M / 1.8M	PRINT SPEED	4 pass	200 Sq.Ft./H	INK	TYPE ECO- SOLVENT INKS & OIL BASED INK COLOR CMYK
		6 pass	140 Sq.Ft./H		
		8 pass	110 Sq.Ft./H		
PRINTING MEDIA PVC FLEX, VINYL, ONE WAY VISION, SAV, PP PAPER, PP FILM		MACHINE SIZE L * W* H (MM) 2500/620X570(MM) / 2680X620X570(MM)			
PRINTING WORKFLOW Direct print job from PC		CLEANING SYSTEM AUTO CLEANING SYSTEM		NETT WEIGHT 125 kg / 150 kg	

# SAFJET

## i3200 - ECO SOLVENT

### ECO SOLVENT / WATER BASED PRINTING MACHINE

#### ADVANCED INTELLIGENT TECHNOLOGY



### SPECIFICATION

MODEL No.	PRINT HEAD	QTY	COLOR	INK TYPE
i3200 - ECO SOLVENT	Epson DX5 heads / Epson i3200 heads	2	CMYK	Eco solvent Ink/ Water Based Ink
INK SUPPLY	SPEED ▶	HEATING SYSTEM		DIMENSION
Automatic ink supply	Draft Mode ▶26 m2/h Precision ▶22 m2/h Photo ▶18 m2/h	Front / Middle/ Rear heating		1520mm

PRINTER SIZE : 6 FEET



# SAFJET

High Print Quality  
UV Flatbed Printer



### SPECIFICATION

MODEL No.	PRINT HEAD	PRINTING TECHNOLOGY
SAF-LE-1216	5-8 Ricoh Gh2220	Piezoelectric inkjet, variable dot printing ( 3.5 - 7pl )
<b>PRINTING RESOLUTION</b> 720 X 900 dpi, 720 x 1200 dpi	<b>PRINTING DIRECTION</b> Uni and Bi - direction	<b>INK TYPE</b> UV LED Curable inks
<b>INK CONFIGURATION</b> CMYK+W, CMYK+WW+VV	<b>IMAGE PROCESS</b> SOFTWARE : COLORGATE ( Bundle Version)	

# SAFJET

UV Roll to Roll  
High Speed UV Roll to Roll Printer

L A Y E R S P R I N T I N G



HIGH EFFICIENT UV LED TECHNOLOGY

### SPECIFICATION

PRINTING METHOD	INK	MEDIA TYPE	POWER SUPPLY
Piezoelectric Print Head Quantity 2	C/M/Y/K+W UV Ink	Backlit Film, Car stickers, One way vision stickers, Clear Film, Canvas and other Printing Material	Rated Frequency: 50HZ
<b>NOZZLE CLEANING</b> Manual Cleaning Dence	<b>PRINT PORT CHANGE</b> USB	<b>WORKING ENVIRONMENT</b> Temperature: 18°C-29°C, Humidity: 50%-70%	Temperature: 18°C-29°C, Humidity: 50%-70%

**MACHINE DIMENSION** L3200 x W1100 x H1500 (mm) Weight 600kg